

# Endoscopic and Endoscope-Assisted Neurosurgery



– LIVE SURGERY 2016 –

Department of Neurosurgery,  
Greifswald, Germany

## INVITATION



Dear colleagues,

it is a great pleasure to invite you to our clinical course on endoscopic and endoscope-assisted neurosurgery here in Greifswald. During our course, you will see various neurosurgical interventions including ventricular endoscopy, endoscope-assisted skullbase surgery, and endoscopic endonasal skullbase surgery in our endoscopic OR equipped with state-of-the-art HD technology. Initially, we will give you a short introduction to our endoscopic techniques. Then, we will discuss the surgical cases including the imaging findings and the planning of the appropriate approach. During the surgeries you will see the advantages of endoscopic visualization especially in narrow and deep surgical corridors or when looking around a corner or behind neurovascular structures.

I look forward to welcoming you in Greifswald!

Henry W. S. Schroeder

## MAIN FEATURES

- Live Surgeries (ventricular endoscopy, transcranial and endonasal skullbase approaches)
- Demonstration of Endoscopic and Endoscope-Assisted Microsurgical Techniques
- Pre- and Postoperative Discussion of the Cases
- Technical Basics of High Definition Technology

## DATES

07.04. – 08.04.2016

13.10. – 14.10.2016

10.11. – 11.11.2016



## **COURSE FEE AND REGISTRATION**

The course fee is 150 EUROS.  
Included in the course fee is a dinner.

The course is limited to 4 participants.  
Participants will be accepted on a first  
come, first served basis. Accepted  
participants will receive a confirmation  
from the organizing secretary.

For your registration please use the  
registration card enclosed and  
fax to +49 (0)3834 866164 or simply  
send an E-mail to:  
[elke.roesel@uni-greifswald.de](mailto:elke.roesel@uni-greifswald.de).

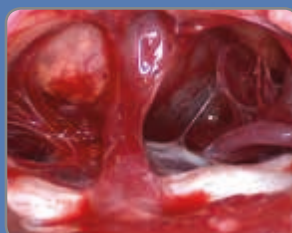
Please transfer the participation fee  
after receipt of the confirmation within  
14 days to the following account:

Account holder: EMAU Greifswald  
Reference: HD 2016 DS17009000  
Sparkasse Vorpommern Greifswald  
IBAN: DE 46 150 505 000 23 000 54 54  
Account No. 23 000 54 54  
SWIFT: NOLADE 21 GRW.  
Bank code number: 150 505 00

## **ACCOMMODATION**

Europa Hotel Greifswald  
Hans-Beimler-Str. 1-3  
17491 Greifswald  
Germany  
Phone: +49 (0)3834 801-0  
Fax: +49 (0)3834 801-100

For further information please contact  
our organizing secretary or the Europa  
Hotel Greifswald.





## ORGANIZATION

Prof. Henry W. S. Schroeder  
Ernst Moritz Arndt University  
Department of Neurosurgery  
Sauerbruchstr.  
17475 Greifswald  
Germany

## KINDLY SUPPORTED BY



**STORZ**  
KARL STORZ — ENDOSKOPE  
*THE DIAMOND STANDARD*

**UNDER THE AUSPICES OF THE INTERNATIONAL  
FEDERATION OF NEUROENDOSCOPY AND THE  
NEUROENDOSCOPY COMMITTEE OF THE WORLD  
FEDERATION OF NEUROSURGICAL SOCIETIES**



Ivory puzzle ball containing 25 balls, freely rotatable, China, 19th century, German Ivory Museum Eibach

NEURO 10 2.0 03/2015/A-E



# UNIDRIVE® S III NEURO

Multifunctional High-Speed Motor System  
from KARL STORZ

**STORZ**  
KARL STORZ — ENDOSKOPE

THE DIAMOND STANDARD

## REGISTRATION

Ernst Moritz Arndt University, Department of Neurosurgery  
Sauerbruchstr., 17475 Greifswald  
Phone: +49 (0)3834 866162, Fax: +49 (0)3834 866164  
E-Mail: elke.roesel@uni-greifswald.de

Participants limited to 4.

**I want to participate in the clinical course on endoscopic and endoscope-assisted neurosurgery on the following dates:**

☐ 07.04. – 08.04.2016

☐ 13.10. – 14.10.2016

☐ 10.11. – 11.11.2016

---

Name

---

Title

Position

---

Address

---

E-Mail

---

Phone

Fax

---

Number of participants

Date

Signature

**Course fee:** 150 Euros (incl. VAT).

Please transfer the participation fee after receipt of the confirmation within 14 days to the following account:

Account holder: EMAU Greifswald  
Sparkasse Vorpommern Greifswald  
Account No. 23 000 54 54  
Bank code number: 150 505 00  
Reference: HD 2016 DS17009000  
IBAN: DE 46 150 505 000 23 000 54 54  
SWIFT: NOLADE 21 GRW.