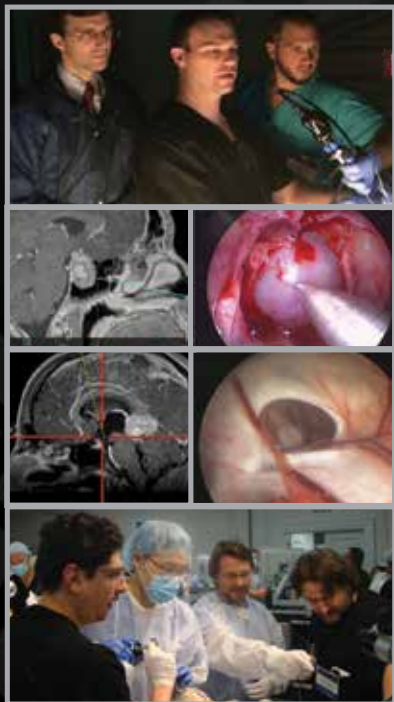


September 15-18 | 2016 St. Louis, Missouri USA



4th Annual Saint Louis University Department of Neurosurgery
Combined Ventricular and Skull Base Endoscopy Course
for Neurosurgeons:
Hands-on Cadaver Course



Course Director:

Samer K. Elbabaa, MD, FAANS, FACS

Honored Guest:

Charlie Teo, MBBS, FRACS



in Collaboration with IFNE
(International Federation of Neuroendoscopy)



**SAINT LOUIS
UNIVERSITY**

— EST. 1818 —

An offering through:
Practical Anatomy & Surgical Education
Department of Surgery
Saint Louis University School of Medicine

<http://pa.slu.edu>

Ventricular Anatomy and Basic Intra-Ventricular Procedures

- 3D Ventricular Anatomy : Craniometric Points, Endoscopic Approaches and Correlating White Matter Fiber Tractography
- Basics of Neuro-Endoscopy : Equipment and Surgical Planning
- Endoscopic Third Ventriculostomy (ETV): Technique, Indications and Outcomes
- Endoscopic Management of Complex Hydrocephalus
- Endoscopic Choroid Plexus Coagulation
- **Podium Cadaveric Demonstration and Hands-On Laboratory:**
-Endoscopic Third Ventriculostomy
-Endoscopic Septum Pellucidum Fenestration
-Endoscopic Shunt Placement and use of Endoscopic Navigation
-Endoscopic Choroid Plexus Coagulation

Intra-Ventricular Tumors

- HONORED GUEST LECTURE: Endoscopic Management of Intra-Ventricular Tumors
- Overview of Cadaveric Intra-Ventricular and Skull Base Tumor Models
- HONORED GUEST LECTURE: Endoscopic Management of Colloid Cysts
- **Podium Cadaveric Demonstration and Hands-On Laboratory:**
-Endoscopic Biopsy/ Resection of Intra-Ventricular Tumors
-Endoscopic Excision of Colloid Cyst/ Approach to the Third Ventricle
-Use of Stereotactic Navigation during Endoscopic Ventricular Surgery
-Cadaveric Intra-Ventricular Tumor Model

Advanced Intra-Ventricular and Craniofacial Procedures

- Endoscope-Assisted Craniofacial Correction of Craniostenosis
- HONORED GUEST LECTURE: Complication Avoidance during Intraventricular Endoscopy
- Exoscopic Transsulcal Subcortical Parafascicular Surgery for Intracerebral Hemorrhage
- Contact Neuroendoscopy and Tractography in Glioma Surgery: a Multimodal Approach
- Open Discussion of Ventricular Endoscopy Cases

Endoscopic Approaches to the Skull Base (Part I)

- Basic Endoscopic Sinus and Skull Base Anatomy
- Standard Versus Expanded Endonasal Trans-Sphenoidal Approaches: Technique and Indications
- Endoscopic Management of Esthesioneuroblastomas
- **Podium Cadaveric Dissection:**
-Standard Endonasal Trans-Sphenoidal Approach to the Sella
-Expanded Endonasal Trans-Sphenoidal Approach to the Sella and Parasellar Lesions
- **Hands-On Laboratory: Standard and Expanded Endonasal Trans-Sphenoidal Approaches to the Sella**



Endoscopic Approaches to the Skull Base (Part I)

- Endoscopic Endonasal Surgery for Pituitary Tumors
- Microsurgery for Ventricular and Suprasellar Tumors
- Endoscopic Approaches/Outcomes to Anterior Skull Base Meningiomas
- Endoscopic Nasoseptal Flap Reconstruction of the Skull Base
- Endoscopic Repair of CSF Leak
- **Podium Cadaveric Demonstration and Hands-On Laboratory:**
-Expanded Endonasal Trans-Sphenoidal Approach to the Sella and Parasellar Lesions
-Endoscopic Approaches to the Anterior Skull Base
-Endoscopic Nasoseptal Flap Reconstruction and CSF Leak Repair
- Supra-Orbital Keyhole Craniotomy for Suprasellar and Vascular Lesions
- Endoscopic/ Endoscope-Assisted Microsurgery for Craniopharyngiomas
- Endoscope-Assisted Microsurgery for Vascular Lesions
- **Hands-On Laboratory:**
-Expanded Endonasal Trans-Sphenoidal Approach to the Sella and Parasellar Lesions
-Endoscopic Approaches to the Anterior Skull Base
-Endoscopic Nasoseptal Flap Reconstruction and CSF Leak Repair
-Supraorbital Keyhole Craniotomy
- Open Discussion of Endoscopic Skull Base Cases

Endoscopic Approaches to the Skull Base (Part II)

- Complication Avoidance During Endoscopic Sellar and Suprasellar Tumor Surgery
- Endoscopic Trans-Orbital Approach
- Endoscopic Approach to the Middle & Infra-Temporal Fossa
- **Podium Cadaveric Dissection:**
-Endoscopic Trans-Orbital Approach
-Endoscopic Approach to the Middle & Infra-Temporal Fossa
- Endoscopic Key Hole Approach to The CP Angle and Posterior Fossa
- Endoscopic Approaches to the Clivus and Cranio-Cervical Junction
- **Podium Cadaveric Dissection:**
-Endoscopic Key Hole Approach to The Posterior Fossa
-Endoscopic Approach to the Clivus and Cranio-Cervical Junction
- **Hands-On Laboratory:**
-Endoscopic Key Hole Approach to the Posterior Fossa
-Endoscopic Trans-Orbital Approach
-Endoscopic Approaches the Clivus and Cranio-Cervical Junction
-Endoscopic Approach to the Middle & Infra-Temporal Fossa

Director:

Samer K Elbabaa, MD, FAANS, FACS
Reinert Chair in Pediatric Neurosurgery
Associate Professor of Neurosurgery
Director, Division of Pediatric Neurosurgery
Department of Neurological Surgery
Saint Louis University Medical School
St. Louis, MO

Honored Guest:

Charlie Teo, MBBS, FRACS
Professor, Centre for Minimally Invasive Neurosurgery
Sydney, Australia

Invited Faculty:

Emad About, MD
Assistant Professor
Department of Neurosurgery
Arkansas Neurosciences Institute
St. Vincent Infirmary
Little Rock, AR

Saleem I. Abdulrauf, MD, FACS
Professor and Chairman
Department of Neurosurgery
Neurosurgeon-in-Chief
Saint Louis University Hospital
Director, Center for Cerebrovascular and Skull Base Surgery
Saint Louis University School of Medicine
St. Louis, MO

Khaled Aziz, MD, PhD

Director, Center for Complex Intracranial Surgery
Allegheny General Hospital
Associate Professor of Neurosurgery
Department of Neurosurgery
Drexel University College of Medicine
Pittsburgh, PA

Joseph Brunworth MD

Assistant Professor
Department of Otolaryngology – Head and Neck Surgery
Saint Louis University School of Medicine
St. Louis, MO

Giuseppe Cinalli, MD

President elect, International Federation of Neuro Endoscopy
Director, Division of Pediatric Neurosurgery
Santobono-Pausilipon Children's Hospital, Assistant Professor in Pediatric Neurosurgery
L'Aquila University
Adjunct Professor in Pediatric Neurosurgery
Naples, Italy

Jeremy Ciporen, MD

Director of Surgical Neuro-Oncology
Assistant Professor
Department of Neurological Surgery
Oregon Health and Science University
Portland, OR

Shlomi Constantini, MD, MSc

Professor, Tel Aviv-Sourasky Medical Center
Director, Department of Pediatric Neurosurgery
Dana Children's Hospital
Sackler Faculty of Medicine,
Tel-Aviv University
Tel Aviv, Israel

Jerome Coppens, MD

Assistant Professor
Department of Neurosurgery
Saint Louis University School of Medicine
St. Louis, MO

Alvaro Cordoba, MD, FMUW

Assistant Professor
Department of Neurosurgery
British Hospital
Montevideo, Uruguay

Dary Costa, MD

Assistant Professor
Pediatric Otolaryngology
Saint Louis University School of Medicine
St. Louis, MO

James Evans, MD

Professor of Neurological Surgery and Otolaryngology
Department of Neurosurgery
Director of Cranial Base and Pituitary Surgery
Thomas Jefferson University of Physicians
Vice President, North American Skull Base Society
Philadelphia, PA

Anand V. Germanwala, MD, FAANS

Associate Professor & Residency Program Director
Department of Neurological Surgery
Loyola University Stritch School of Medicine
Chief of Neurological Surgery
Edward Hines, Jr. VA Hospital
Maywood, IL

Pablo González-López, MD, PhD

Neurooncology and Skull Base Division
Department of Neurosurgery
Hospital General Universitario Alicante
Miguel Hernández University
Alicante, Spain

Cristian Gagnaniello, MD, PhD

George Washington University
Washington, DC

Tenoch Herrada-Pineda MD

Pediatric Neurosurgery
American British Cowdray Medical Center
Mexico City, Mexico

David Limbrick, MD, PhD

Associate Professor
Department of Neurological Surgery and Pediatrics
Co-Director, Pediatric Neurosurgery Fellowship
Associate Residency Program Director
St. Louis Children's Hospital
Washington University School of Medicine
Saint Louis, MO

Philippe Mercier, MD, PhD, FRCS

Assistant Professor of Neurosurgery
Department of Neurological Surgery
Saint Louis University School of Medicine
Saint Louis, MO

Javier Abarca Olivas, MD

Department of Neurosurgery, Skull Base Division
Hospital General Universitario Alicante
Miguel Hernandez University, School of Medicine
Alicante, Spain

Faculty subject to change, for updates, please go to <http://pa.slu.edu>

EDUCATIONAL OBJECTIVES

This workshop has been designed to provide the neurosurgeons the opportunity to enhance their own skills in a variety of endoscopic approaches to the ventricles and skull base. The participants will:

- Review and perform endoscopic surgical approaches to the lateral ventricles, perform endoscopic third ventriculostomy, perform endoscopic placement of shunt, perform endoscopic septum fenestration and remove intraventricular tumors.
- Review and perform endoscopic surgical approaches to the anterior, lateral and posterior skull base on cadaveric specimens
- Learn and discuss the indications and differences between standard microsurgical and endoscopic approaches.
- Discuss the surgical techniques and complexity of the various surgical approaches reviewed, viewing surgical videos and interacting with the world renowned experts in the field.
- Discuss complication avoidance and management

ACCREDITATION:

Saint Louis University School of Medicine is accredited by the Accreditation Council for Continuing Medical Education (ACCME) to provide continuing medical education for physicians.

CONTINUING EDUCATION

Saint Louis University School of Medicine designates this live activity for a maximum of 29.5 AMA PRA Category 1 Credit(s)[™]. Physicians should only claim credit commensurate with the extent of their participation in the activity.

REGISTRATION DETAILS & COURSE FEES

Physicians: \$1895
Residents/Fellows/USA Military: \$1195

For Further Course Details and REGISTRATION go to: <http://pa.slu.edu>

This workshop will be held at the PASE Learning Center located in Young Hall, 3839 Lindell Boulevard, Saint Louis, MO 63108