

# 8<sup>th</sup> BALTIC SEA 2016

International Hands-on Course on FULL  
HD Endoscopic Neurosurgery



September 28<sup>th</sup> – 30<sup>th</sup>, 2016

Departments of Neurosurgery and Anatomy  
Greifswald, Germany

## INVITATION



Dear colleagues,

It is a great pleasure to invite you to our practical hands-on training course for cranial endoscopic neurosurgery in Greifswald. The course is designed for neurosurgeons who have no experience with endoscopic neurosurgery as

well as for surgeons who have already started with endoscopy and want to improve their knowledge and skills. Therefore, ample time will be provided for hands-on dissection in cadaver specimens. After a theoretical introduction to the topic, training in various neurosurgical interventions including ventricular endoscopy, endoscope-assisted skull base surgery and endonasal skullbase surgery under HD-visualization will be given.

After the course participants should be able to discuss the latest advances and controversies in endoscopic and endoscope-assisted neurosurgery.

I look forward to welcoming you in Greifswald in September 2016.

A handwritten signature in white ink, consisting of a stylized 'H' and 'S' followed by a long horizontal stroke.

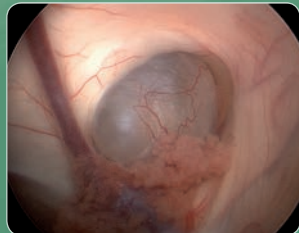
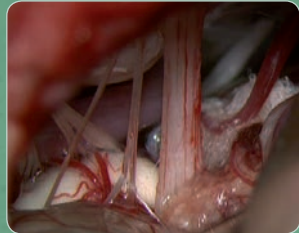
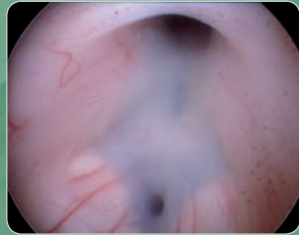
Henry W. S. Schroeder

## MAIN FEATURES OF THE COURSE

- Lectures on endoscopic anatomy, endoscopic equipment, and endoscopic as well as endoscope-assisted surgical techniques
- Video demonstration of various endoscopic techniques
- Hands-on dissection on cadaver specimens including intraventricular, subarachnoid, and endonasal approaches
- Live surgeries with pre- and postoperative discussion of the cases, analysis and importance of surgical planning for endoscopic approaches
- Written anonymous evaluation of the course
- All workstations equipped with the latest High Definition (FULL HD) technology
- 2 participants per workstation

## COURSE TOPICS

- Technical basics of neuroendoscopy and HD-visualization
- Intraventricular endoscopy
- Endonasal endoscopic pituitary surgery
- Endoscope-assisted microsurgical skull base surgery
- Live operations of intraventricular and skull base approaches



## PROGRAM

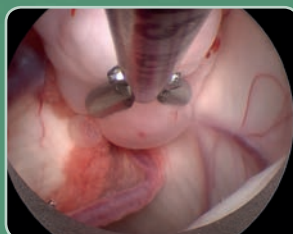
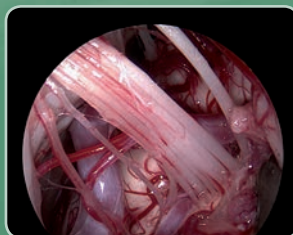
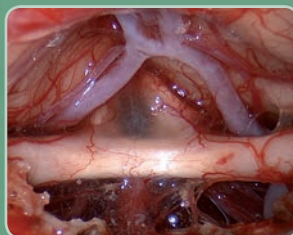
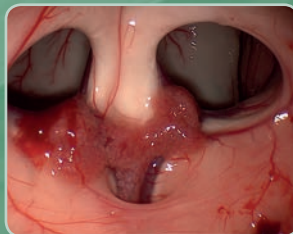
### Wednesday, 28<sup>th</sup> September 2016

- 08:00 a.m. Registration
- 08:30 a.m. Welcome
- 08:35 a.m. History of Neuroendoscopy
- 08:50 a.m. Current technology of endoscopy and HD-visualization
- 09:10 a.m. Concept of neuroendoscopy and endoscope-assisted microsurgery
- 09:35 a.m. Intraventricular anatomy
- 09:55 a.m. Coffee break
- 10:10 a.m. **Lab I**  
Endoscopic instrumentation and set-up Endoscopic exercises on head models
- 11:40 a.m. Endoscopic third ventriculostomy
- 12:10 p.m. Aqueductoplasty, stenting, and septostomy
- 12:40 p.m. Intraventricular tumors
- 01:10 p.m. Lunch
- 02:10 p.m. Arachnoid, pineal, and parenchymal cysts
- 02:40 p.m. Colloid cysts
- 03:10 p.m. Coffee break
- 03:25 p.m. **Lab II**  
Intraventricular endoscopy
- 05:25 p.m. Demonstration of anatomic specimen
- 07:30 p.m. Dinner



## Thursday, 29<sup>th</sup> September 2016

- 08:00 a.m. Anatomy of the paranasal sinus and sellar region
- 08:20 a.m. Endonasal endoscopic skullbase surgery – technique and indication
- 09:00 a.m. Live surgery: Endonasal endoscopic skullbase surgery and intraventricular endoscopy and/or endoscope-assisted skull base surgery
- 10:45 a.m. Coffee break
- 11:00 a.m. Live surgery
- 01:00 p.m. Lunch
- 02:00 p.m. **Lab III**  
Endonasal endoscopic skullbase approach
- 05:00 p.m. Coffee break
- 05:15 p.m. Anatomy of the suprasellar region
- 05:35 p.m. Endoscope-assisted microsurgical skull base surgery of the suprasellar region - technique and indications
- 06:05 p.m. **Lab IV**  
Endoscope-assisted skull base surgery: Supraorbital approach
- 08:00 p.m. Dinner



## Friday, 30<sup>th</sup> September 2016

- 08:30 a.m. Anatomy of the cerebellopontine angle
- 09:00 a.m. Endoscope-assisted microsurgical skull base surgery of the CP angle – technique and indications
- 09:30 a.m. Coffee break
- 09:45 a.m. **Lab V**  
Endoscope-assisted skull base surgery: Retrosigmoid approach
- 11:45 p.m. Complications and avoidance
- 12:00 p.m. Lunch
- 01.00 p.m. Case discussions
- 02.15 p.m. Closing remarks
- 02.30 p.m. End of the course

## **COURSE DIRECTOR**

Henry W. S. Schroeder, M.D., Ph.D.  
Department of Neurosurgery  
Ernst Moritz Arndt University, Greifswald

## **SPECIAL GUESTS**

Giuseppe Cinalli M.D.  
Department of Pediatric Neurosurgery  
Santobono Children's Hospital, Naples  
Italy

Fred Gentili, M.D.  
Division of Neurosurgery  
University of Toronto  
Canada

## **FACULTY**

Jörg Baldauf, M.D.,  
Department of Neurosurgery, University  
Greifswald

Michael Fritsch, M.D., Ph.D.,  
Department of Neurosurgery  
Neubrandenburg

Thomas Koppe, M.D., Ph.D.,  
Institute of Anatomy,  
University Greifswald

Bärbel Miehe, M.D.,  
Institute of Anatomy,  
University Greifswald

Veit Rohde, M.D., Ph.D.,  
Department of Neurosurgery, University  
Göttingen

## **Course Location**

Institute of Anatomy  
Fr.-Loeffler-Str. 23  
17475 Greifswald, Germany

Ivory puzzle ball containing 25 balls, freely rotatable, China, 19th century, German Ivory Museum Erbach

NEURO 10 2.0 03/2015/A-E



# UNIDRIVE® S III NEURO

Multifunctional High-Speed Motor System  
from KARL STORZ

**STORZ**  
KARL STORZ — ENDOSKOPE  
THE DIAMOND STANDARD



# REGISTRATION

## 8<sup>th</sup> Baltic Sea 2016

### International Hands-on Course on Cranial Endoscopic Neurosurgery Greifswald, Germany, September 28<sup>th</sup> - 30<sup>th</sup>, 2016

A maximum of 30 participants will be enrolled.

Requests for admission must be sent to the organizing secretary by fax or e-mail.

Participants will be accepted on a first come, first served basis. Accepted participants will receive a confirmation from the organizing secretary.

Final confirmation of participation will be sent only after receiving the full payment.

Registration Deadline: 1<sup>st</sup> July 2016

Name: \_\_\_\_\_ Degree: \_\_\_\_\_

Institute/Department/Mail address: \_\_\_\_\_

City/Postal code: \_\_\_\_\_ Country: \_\_\_\_\_

Phone: \_\_\_\_\_ Fax: \_\_\_\_\_

E-Mail: \_\_\_\_\_

Register via e-mail or fill out and fax this form to:

Elke Rösel

Department of Neurosurgery • Ernst Moritz Arndt University

Sauerbruchstraße • 17475 Greifswald • Germany

E-Mail: [Elke.Roesel@uni-greifswald.de](mailto:Elke.Roesel@uni-greifswald.de) • Fax: +49 3834 86-6164

#### Course fee

1,400 Euros (incl. VAT). The course fee includes

- auditorium facilities
- course material
- all meals incl. coffee breaks, lunch, dinner
- 3 nights hotel accommodation (September 27<sup>th</sup> - 30<sup>th</sup>)
- hands-on dissection on cadaver specimens.

Please transfer the participation fee after receipt of the confirmation within 14 days to the following account:

Account holder: EMAU Greifswald  
Sparkasse Vorpommern Greifswald  
Account No. 23 000 54 54  
Bank code number: 150 505 00

Reference: Baltic Sea 2016 DS17009000  
IBAN: DE 46 150 505 000 23 000 54 54  
SWIFT: NOLADE 21 GRW.

#### Cancellation terms

In case of written cancellation before 1<sup>st</sup> July 2016 the amount will be refunded less 100 Euros for administrative expenses. Later refunds will not be possible.

## ORGANISATION

Prof. Henry W. S. Schroeder  
Ernst Moritz Arndt University  
Department of Neurosurgery  
Sauerbruchstraße  
17475 Greifswald  
Germany

## KINDLY SUPPORTED BY



**STORZ**  
KARL STORZ — ENDOSKOPE

 **BRAINLAB**



**UNDER THE AUSPICES OF THE INTERNATIONAL  
FEDERATION OF NEUROENDOSCOPY AND THE  
NEUROENDOSCOPY COMMITTEE OF THE WORLD  
FEDERATION OF NEUROSURGICAL SOCIETIES**

